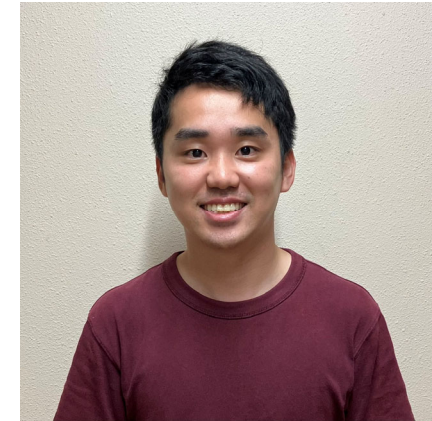


Name: Masaya Matamura  
Affiliation: Graduate School of Bioresources  
Year : D1  
Field : Livestock Science(畜産)  
Keyword: Cattle, Feed nutrition, Deep learning

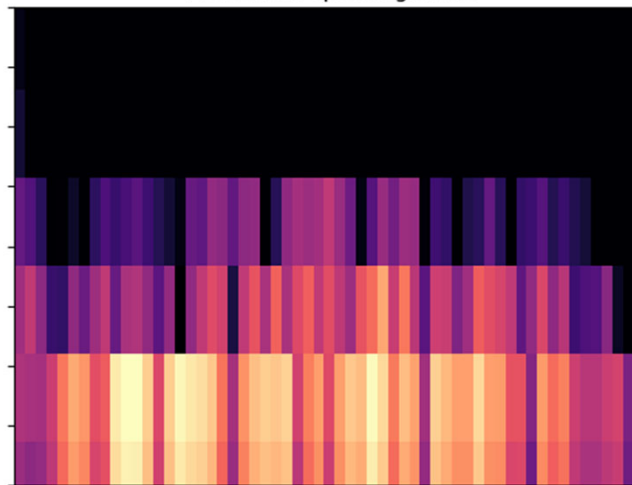


### Research theme(研究テーマ)

Development of an Automatic Respiration  
Rate Detection System for Cattle:  
Application of LSTM and Voice Analysis

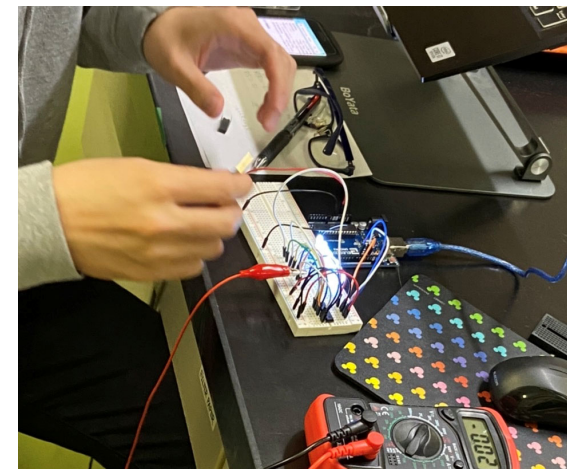


Mel-scaled spectrogram 1



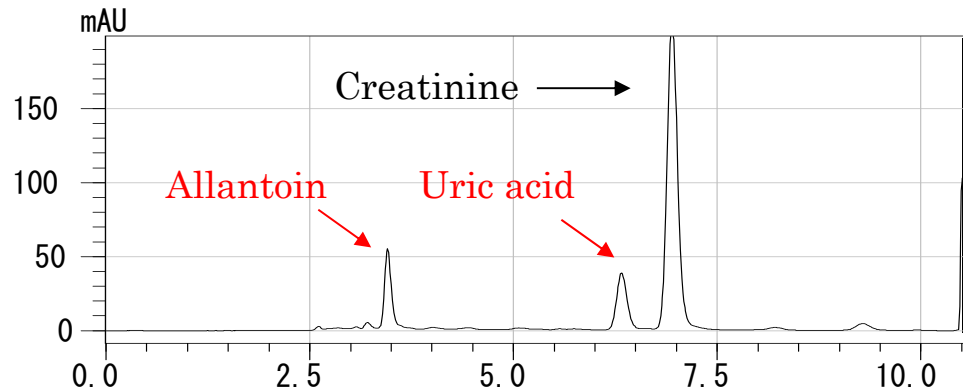
### Hobby(趣味)

- Strength training
- Electronics
- International exchange



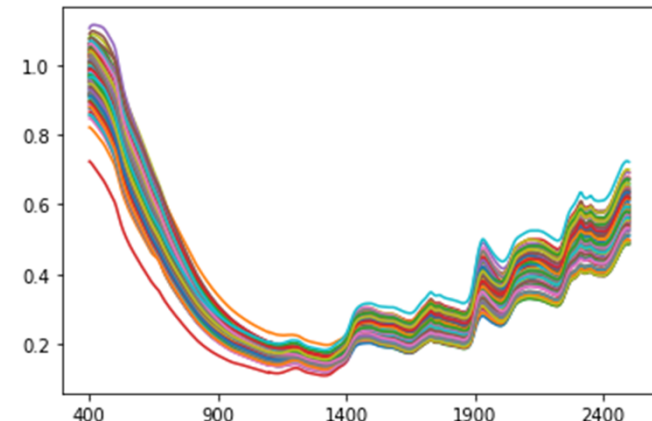
# 過去の研究テーマ (Past Research Themes)

Estimation of Urinary Purine Metabolite Excretion  
Using Partial Urine in Black Japanese Breeds



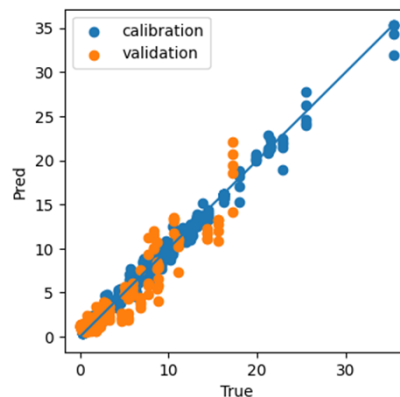
**Nutrition (栄養)**

Prediction of constituents in cattle feces  
using near-infrared spectroscopy



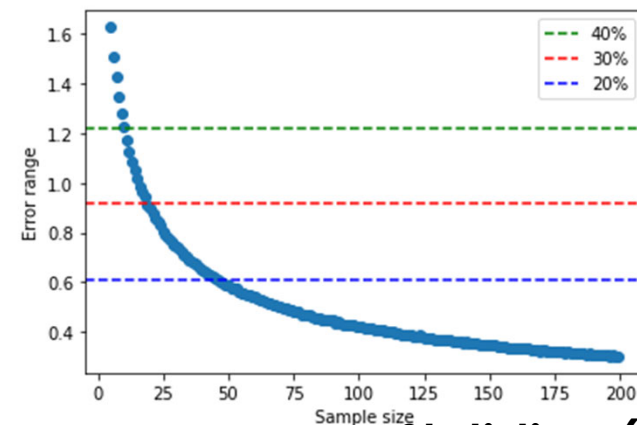
**Optics (光学)**

Determination of starch content in  
feces using deep learning



**Engineering (工学)**

Sample size considerations  
using Monte Carlo methods



**Statistics (統計)**